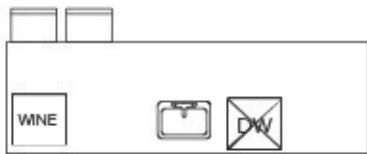


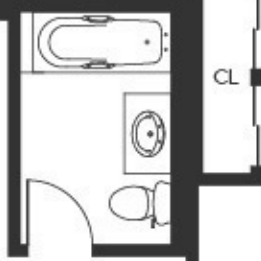
LIVING /  
DINING ROOM  
277" x 19'1"



KITCHEN  
277" x 9'8"



BEDROOM 2  
14'6" x 14'3"

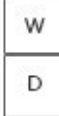
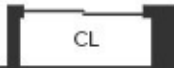


FOYER  
17'8" x 4'9"

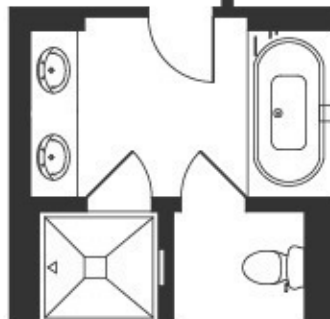


2,145 ft<sup>2</sup> 199.2 M<sup>2</sup>

WIC



MASTER BEDROOM  
17'10" x 15'1"



4 rooms, 2 beds - 2 baths, 1 half bath